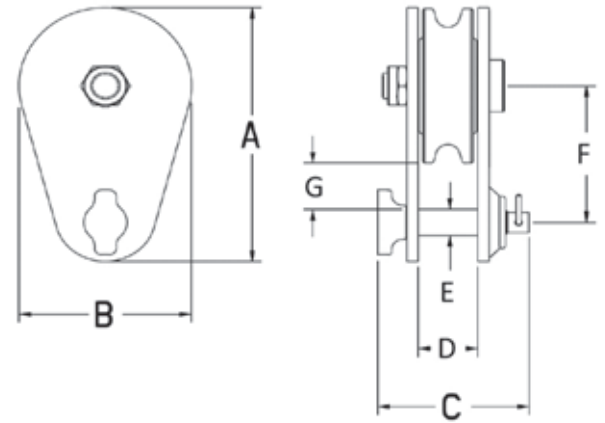


- Opening feature permits easy insertion of rope without reeving. Bolt for opening feature is retained, to ensure no lost bolts.
- Can be furnished with bronze bushings or roller bearings.
- Center pin equipped with pressure lube fitting.
- All sizes feature sheave grooves suited for a range of wire line diameters.
- Meets or exceeds all requirements of ASME B30.26 including identification ductility, design factor, proof load and temperature requirements. Importantly, these blocks meet other critical performance TAIL BOARD, SINGLE SHEAVE, 2 -12t requirements including fatigue life and material traceability, not addressed by ASME B30.26.
- "All Alloy" snatch blocks feature a significant reduction in weight compared to snatch blocks made of non-alloy materials.
- Crosby's Engineered Solutions Group is ready to discuss your requirements and help select or develop the ideal block for your application.



404



L-170



L-160

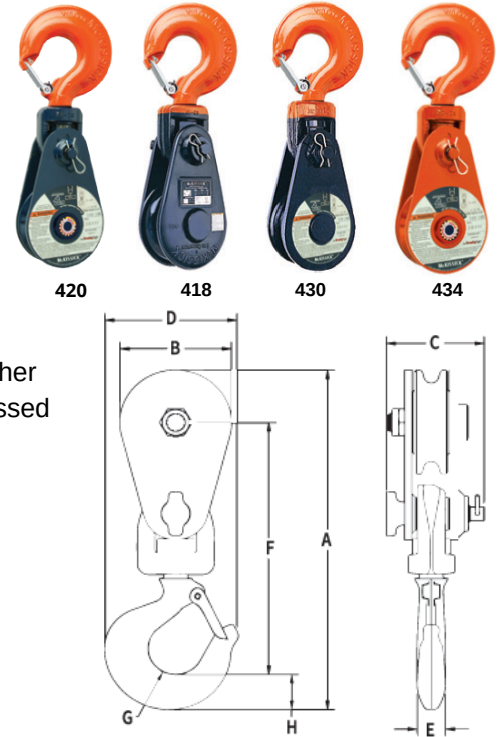


402

Working Load Limit (t)*	Wire Rope Size (in)	Sheave Diameter (in)	Bearing Code	Weight Each (lb)	Catalog No.	Description	Stock No.	Dimensions (in)						
								A	B	C	D	E	F	G
2 tonnes														
2	5/16 - 3/8	3	BB	3	404	Light Champion	102016	4.87	3.00	2.64	1.04	0.50	2.62	0.87
4 tonnes														
4	3/8 - 1/2	4.5	BB	7	404	Light Champion	102025	7.75	4.25	3.13	1.56	0.75	4.25	1.63
5 tonnes														
5	3/8 - 1/2 ‡	4	BB	11	L-170	Lebus, General Purpose	599846	8.38	4.50	2.94	1.57	0.85	4.69	2.25
5	3/8 - 1/2 ‡	4	RB	11	L-170	Lebus, General Purpose	599855	8.38	4.50	2.94	1.57	0.85	4.69	2.25
6 tonnes														
6**	3/8 - 1/2	5	BB	13	L-160	Lebus, Heavy Duty	599542	8.25	5.12	3.69	1.53	0.75	4.25	1.38
6**	3/8 - 1/2	5	RB	13	L-160	Lebus, Heavy Duty	599551	8.25	5.12	3.69	1.53	0.75	4.25	1.38
8 tonnes														
8	5/8 - 3/4	6	BB	15	404	Light Champion	102098	9.87	6.00	4.19	1.80	1.00	5.12	1.62
8	5/8 - 3/4	6	RB	15	404	Light Champion	102114	9.87	6.00	4.19	1.80	1.00	5.12	1.62
8	5/8 - 3/4	8	BB	21	404	Light Champion	102169	11.93	8.12	4.19	1.80	1.00	6.12	1.62
8	5/8 - 3/4	8	RB	21	404	Light Champion	102187	11.93	8.12	4.19	1.80	1.00	6.12	1.62
8	5/8 - 3/4	10	BB	29	404	Light Champion	102230	14.00	10.12	4.19	1.80	1.00	7.19	1.69
8	5/8 - 3/4	10	RB	29	404	Light Champion	102258	14.00	10.12	4.19	1.80	1.00	7.19	1.69
8	5/8 - 3/4	12	BB	36	404	Light Champion	102301	16.81	12.12	4.19	1.80	1.00	9.00	2.50
8	5/8 - 3/4	12	RB	36	404	Light Champion	102329	16.81	12.12	4.19	1.80	1.00	9.00	2.50
12 tonnes														
12**	5/8 - 3/4	5.75	BB	29	L-160	Lebus, Heavy Duty	599604	9.97	6.00	4.19	1.72	1.00	5.22	1.85
12**	5/8 - 3/4	5.75	RB	29	L-160	Lebus, Heavy Duty	599613	9.97	6.00	4.19	1.72	1.00	5.22	1.85
12	3/4 - 7/8	6	BB	15	402	All Alloy	179238	9.87	6.00	4.19	1.80	1.00	5.12	1.62
12	3/4 - 7/8	6	RB	15	402	All Alloy	179283	9.87	6.00	4.19	1.80	1.00	5.12	1.62
12	3/4 - 7/8	8	BB	21	402	All Alloy	179318	11.93	8.12	4.19	1.80	1.00	6.12	1.62
12	3/4 - 7/8	8	RB	21	402	All Alloy	179363	11.93	8.12	4.19	1.80	1.00	6.12	1.62
12	3/4 - 7/8	10	BB	29	402	All Alloy	179434	14.00	10.12	4.19	1.80	1.00	7.19	1.69
12	3/4 - 7/8	10	RB	29	402	All Alloy	179498	14.00	10.12	4.19	1.80	1.00	7.19	1.69

\* Ultimate Load is 4 times the Working Load Limit. \*\* Ultimate Load is 3.5 times the Working Load Limit. ‡ Special Dual Groove Sheave also accepts 1-1/4" Manilla Rope.

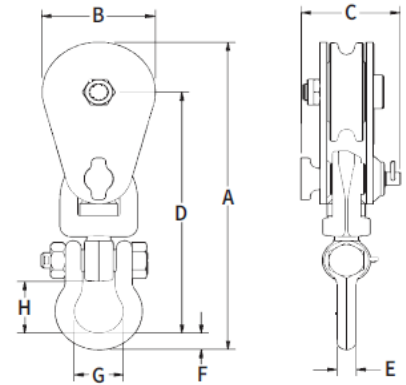
- Opening feature permits easy insertion of rope without reeving, or while the block is suspended.
- Bolt for opening feature is retained, to ensure no lost bolts.
- Forged steel swivel tees, yokes and hooks.
- Furnished with a latch installed.
- Can be furnished with bronze bushings or roller bearings.
- Center pin equipped with pressure lube fitting.
- All sizes feature sheave grooves suited for a range of wire line diameters.
- Meets or exceeds all requirements of ASME B30.26 including identification ductility, design factor, proof load and temperature requirements. Importantly, these blocks meet other critical performance requirements including fatigue life and material traceability, not addressed by ASME B30.26.
- All blocks are RFID EQUIPPED.
- "All Alloy" snatch blocks feature a significant reduction in weight compared to snatch blocks made of non-alloy materials.
- Crosby's Engineered Solutions Group is ready to discuss your requirements and help select or develop the ideal block for your application.



Working Load Limit (t)*	Wire Rope Size (in)	Sheave Diameter (in)	Bearing Code	Weight Each (lb)	Catalog No.	Description	Stock No.	Dimensions (in)							
								A	B	C	D	E	F	G	H
15 tonnes															
15	3/4 - 7/8	8	BB	51	420	Champion	108275	23.50	8.12	5.09	8.34	1.76	16.51	1.50	2.93
15	3/4 - 7/8	8	RB	51	420	Champion	108276	23.50	8.12	5.09	8.34	1.76	16.51	1.50	2.93
15	3/4 - 7/8	10	BB	63	420	Champion	108371	25.25	10.12	5.09	8.34	1.76	17.26	1.50	2.93
15	3/4 - 7/8	10	RB	63	420	Champion	108372	25.25	10.12	5.09	8.34	1.76	17.26	1.50	2.93
15	3/4 - 7/8	16	BB	130	418	Light Champion	108608	32.25	16.12	5.09	8.34	1.76	21.26	1.50	2.93
15	3/4 - 7/8	16	RB	130	418	Light Champion	108626	32.25	16.12	5.09	8.34	1.76	21.26	1.50	2.93
15	7/8 - 1	18	BB	150	418	Light Champion	108644	33.50	18.12	5.09	8.34	1.76	21.51	1.50	2.93
15	7/8 - 1	18	RB	150	418	Light Champion	108662	33.50	18.12	5.09	8.34	1.76	21.51	1.50	2.93
20 tonnes															
20	1 - 1-1/8	8	BB	75	430	Super Champion	120023	25.87	8.12	6.00	9.39	2.00	18.43	1.50	3.38
20	1 - 1-1/8	8	RB	75	430	Super Champion	120041	25.87	8.12	6.00	9.39	2.00	18.43	1.50	3.38
20	1 - 1-1/8	10	BB	89	430	Super Champion	120096	27.94	10.12	6.00	9.39	2.00	19.50	1.50	3.38
20	1 - 1-1/8	10	RB	89	430	Super Champion	120112	27.94	10.12	6.00	9.39	2.00	19.50	1.50	3.38
20	1 - 1-1/8	12	BB	103	430	Super Champion	120176	30.00	12.25	6.00	9.39	2.00	20.50	1.50	3.38
20	1 - 1-1/8	12	RB	103	430	Super Champion	120194	30.00	12.25	6.00	9.39	2.00	20.50	1.50	3.38
20	1 - 1-1/8	14	BB	123	430	Super Champion	120256	32.34	14.00	6.00	9.39	2.00	21.96	1.50	3.38
20	1 - 1-1/8	14	RB	123	430	Super Champion	120274	32.34	14.00	6.00	9.39	2.00	21.96	1.50	3.38
25 tonnes															
25	1 - 1-1/4	8	BB	90	434	All Alloy High Capacity	208896	26.56	8.25	6.13	9.36	2.00	19.06	1.50	3.38
25	1 - 1-1/4	10	BB	107	434	All Alloy High Capacity	208910	28.63	10.25	6.13	9.36	2.00	20.13	1.50	3.38
25	1 - 1-1/4	18	BB	240	430	Super Champion	119486	41.41	18.25	7.12	11.76	2.50	27.97	1.94	4.32
25	1 - 1-1/4	18	RB	240	430	Super Champion	119487	41.41	18.25	7.12	11.76	2.50	27.97	1.94	4.32
30 tonnes															
30	1 - 1-1/4	12	BB	165	434	All Alloy High Capacity	208931	36.32	12.25	7.00	11.76	2.50	25.88	1.94	4.32
30	1 - 1-1/4	14	BB	180	434	All Alloy High Capacity	208932	38.57	14.25	7.00	11.76	2.50	27.13	1.94	4.32
30	1 - 1-1/4	20	BB	375	430	Super Champion	119507	52.15	20.25	8.31	15.24	3.00	36.12	2.25	5.91
30	1 - 1-1/4	20	RB	375	430	Super Champion	119516	52.15	20.25	8.31	15.24	3.00	36.12	2.25	5.91
30	1 - 1-1/4	24	BB	450	430	Super Champion	119525	55.75	24.25	8.31	15.24	3.00	37.75	2.25	5.91
30	1 - 1-1/4	24	RB	450	430	Super Champion	119534	55.75	24.25	8.31	15.24	3.00	37.75	2.25	5.91

\* Ultimate Load is 4 times the Working Load Limit.

- Opening feature permits easy insertion of rope without reeving, or while the block is suspended.
- Bolt for opening feature is retained, to ensure no lost bolts.
- Forged steel swivel tees, yokes and shackles.
- Can be furnished with bronze bushings or roller bearings.
- Center pin equipped with pressure lube fitting.
- All sizes feature sheave grooves suited for a range of wire line diameters.
- Meets or exceeds all requirements of ASME B30.26 including identification ductility, design factor, proof load and temperature requirements. Importantly, these blocks meet other critical performance requirements including fatigue life and material traceability, not addressed by ASME B30.26.
- "All Alloy" snatch blocks feature a significant reduction in weight compared to snatch blocks made of non-alloy materials.
- "Lebus, General Purpose" snatch blocks (with shackle or hook) feature an easy-to open bolt design. The retaining bolt is released by rotating the fitting assembly, no tools required.
- Crosby's Engineered Solutions Group is ready to discuss your requirements and help select or develop the ideal block for your application.



Working Load Limit (t)*	Wire Rope Size (in)	Sheave Diameter (in)	Bearing Code	Weight Each (lb)	Catalog No.	Description	Stock No.	Dimensions (in)							
								A	B	C	D	E	F	G	H
2 tonnes															
2	5/16 - 3/8	3	BB	4	419 w/ Eye	Light Champion	109037+	8.67	3.00	2.64	6.61	0.56	0.56	1.38	1.38
2	5/16 - 3/8	3	BB	5	419	Light Champion	109091	9.27	3.00	2.64	7.27	0.50	0.50	1.32	1.56
4 tonnes															
4	3/8 - 1/2	4.5	BB	12	419	Light Champion	109064	13.38	4.24	3.13	10.57	0.62	0.69	1.70	2.00
5 tonnes															
5	3/8 - 1/2‡	4	BB	11	L-170	Lebus, General Purpose	599828	13.88	4.50	2.94	10.94	0.62	0.69	1.70	2.00
5	3/8 - 1/2‡	4	RB	11	L-170	Lebus, General Purpose	599837	13.88	4.50	2.94	10.94	0.62	0.69	1.70	2.00
6 tonnes															
6**	3/8 - 1/2	5	BB	13	L-160	Lebus, Heavy Duty	599524	13.82	5.12	3.69	10.57	0.62	0.69	1.70	2.00
6**	3/8 - 1/2	5	RB	13	L-160	Lebus, Heavy Duty	599533	13.82	5.12	3.69	10.57	0.62	0.69	1.70	2.00
8 tonnes															
8	5/8 - 3/4	6	BB	28	419	Light Champion	109126	18.93	6.00	4.19	14.68	1.25	1.25	3.00	3.47
8	5/8 - 3/4	6	RB	28	419	Light Champion	109153	18.93	6.00	4.19	14.68	1.25	1.25	3.00	3.47
8	5/8 - 3/4	8	BB	33	419	Light Champion	109224	20.99	8.12	4.19	15.68	1.25	1.25	3.00	3.47
8	5/8 - 3/4	8	RB	33	419	Light Champion	109251	20.99	8.12	4.19	15.68	1.25	1.25	3.00	3.47
8	5/8 - 3/4	10	BB	43	419	Light Champion	109322	23.06	10.12	4.19	16.75	1.25	1.25	3.00	3.47
8	5/8 - 3/4	10	RB	43	419	Light Champion	109359	23.06	10.12	4.19	16.75	1.25	1.25	3.00	3.47
8	5/8 - 3/4	12	BB	55	419	Light Champion	109420	25.87	12.12	4.19	18.56	1.25	1.25	3.00	3.47
8	5/8 - 3/4	12	RB	55	419	Light Champion	109457	25.87	12.12	4.19	18.56	1.25	1.25	3.00	3.47
8	5/8 - 3/4	14	BB	67	419	Light Champion	109527	27.37	14.12	4.19	19.06	1.25	1.25	3.00	3.47
8	5/8 - 3/4	14	RB	67	419	Light Champion	109545	27.37	14.12	4.19	19.06	1.25	1.25	3.00	3.47
12 tonnes															
12**	5/8 - 3/4	5.75	BB	29	L-160	Lebus, Heavy Duty	599588	19.03	6.00	4.19	14.78	1.25	1.25	3.00	3.47
12**	5/8 - 3/4	5.75	RB	29	L-160	Lebus, Heavy Duty	599597	19.03	6.00	4.19	14.78	1.25	1.25	3.00	3.47
12	3/4 - 7/8	6	BB	28	417	All Alloy	168972	18.93	6.00	4.19	14.68	1.25	1.25	3.00	3.47
12	3/4 - 7/8	6	RB	28	417	All Alloy	193757	18.93	6.00	4.19	14.68	1.25	1.25	3.00	3.47
12	3/4 - 7/8	8	BB	34	417	All Alloy	168990	20.99	8.12	4.19	15.68	1.25	1.25	3.00	3.47
12	3/4 - 7/8	8	RB	34	417	All Alloy	193819	20.99	8.12	4.19	15.68	1.25	1.25	3.00	3.47
12	3/4 - 7/8	10	BB	42	417	All Alloy	193882	23.06	10.12	4.19	16.75	1.25	1.25	3.00	3.47
12	3/4 - 7/8	10	RB	42	417	All Alloy	193935	23.06	10.12	4.19	16.75	1.25	1.25	3.00	3.47

\* Ultimate Load is 4 times the Working Load Limit. \*\* Ultimate Load is 3.5 times the Working Load Limit. † Fitted with 1-1/4" ID Swivel Eye. ‡ Special Dual Groove Sheave also accepts 1-1/4" Manilla Rope.